

YELLOWJACKET® B/A/N/G

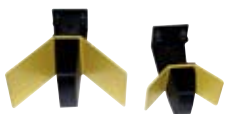
HANDHELD 802.11 B/A/N/G WI-FI ANALYSIS

Yellowjacket® B/A/N/G is a wireless test receiver system that demodulates, sweeps, analyzes, and optimizes all popular 802.11 Wi-Fi network standards including 802.11b/g (2.4 GHz), 802.11a (5 GHz) and even 802.11n. The calibrated receiver is a passive measurement device that is network independent so it remains “invisible” to any Wi-Fi network. **Yellowjacket® B/A/N/G** is also a powerful spectrum analyzer that measures RF energy (2.0-4.0 & 4.9-5.9 GHz) allowing not only detailed interference analysis but the ability to see the “whole picture” of your 2.4 and 5 GHz network WISP or hotspot. When equipped with a BVS DF (Direction Finding) antenna, **Yellowjacket® B/A/N/G** locates and pinpoints rogue APs and STAs and even detects spurious interference from sources such as microwave ovens and cordless phones. Powerful packet analysis features such as Multipath (Ec/Io), Delay Spread, Channel Frequency Response (CFR), SSID and Received Signal Strength Indicator (RSSI) give **Yellowjacket® B/A/N/G** the distinction of being the only true handheld RF spectrum protocol analysis and direction finding tool accurate to within 1 dB. **Yellowjacket® B/A/N/G** functions as a complete WLAN analysis system offering both measurements made through packet demodulation and spectrum analysis in a rugged, handheld package.

Shown with optional Direction Finding Antenna

FEATURES:

- Measure 2.4 GHz coverage for DSSS and OFDM WLANs within the IEEE 802.11b/n/g standard
- Measure 5 GHz coverage for OFDM WLANs within the IEEE 802.11a standard
- Receive, filter and process DSSS and OFDM studies all in a handheld Windows Mobile OS® environment
- 802.11 packet Demodulation tools for Channel Frequency Response and Antenna Alignment
- Complex AP / STA list analysis including Multipath, Absolute Channel, and SSID
- Full Spectrum Analysis including Power Triggers, Waveform Traces & Full Spectrum Sweep
- Measure RSSI in true dBm with a calibrated receiver
- Multipath and RSSI; narrow band & total channel power
- Rechargeable Internal Li-Poly battery or A/C power
- MAC Security Authorization Lists/Detection/Alarms as well as WEP and WPA encryption detection
- Internal GPS receiver for realtime geo-coding of all measurements
- Optional Direction Finding antennae for locating rogue APs, WLAN hackers and spurious RF interference
- Optional RJ-45 Ethernet Port for fast, networked PC communication
- Optional Swarm™ mapping/validation coverage analysis software



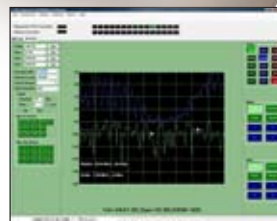
Optional 2.4 GHz Optional 5 GHz



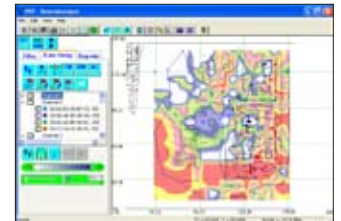
Optional 30 dB Attenuator



Optional 12V Power Inverter



Optional Remote Monitoring Software



Optional Swarm™ Mapping Analysis Software

2.0-4.0 GHz
Full Spectrum Analysis
4.9-5.9 GHz

Call us today for more information:
TOLL FREE 1-888-737-4287 / (outside U.S. & Canada) +1 732-548-3737
www.bvsystems.com
sales@bvsystems.com


BERKELEY VARITRONICS SYSTEMS®
Clarifying RF

Providing wireless solutions for over 35 years.


YELLOWJACKET®-B/A/N/G

HANDHELD 802.11B/A/N/G WI-FI ANALYSIS

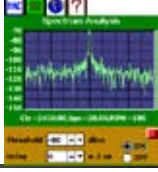
DEMODULATOR SPECIFICATIONS

BANDS SUPPORTED	2.4-2.5 GHz, 5-5.8 GHz (includes 802.11a, 802.11n and 802.11h)	
RF SENSITIVITY (Wide Band)	-20 to -90 dBm	
PACKET PREAMBLE DEMODULATOR and ANALYZER	Multipath Measurement and Graphical Display	
CORRELATED POWER MEASUREMENTS	RATIO	
Correlated Power (dBm)	-30 dBm : -100 dBm	
Correlated Power to Total Power Ec/Io (dB)	0 dB : -10 dB	
Total Channel Power Measurement	- 20 dBm : -80 dBm	


SPECTRUM ANALYZER SPECIFICATIONS

BANDS SUPPORTED	2.0 - 4.0 GHz & 4.9 - 5.9 GHz (includes 802.11a, 802.11n and 802.11h)	
AVERAGE NOISE FLOOR (NO INPUT)	< -100 dBm (reference level -70 dBm, resolution bandwidth = 50 kHz)	
DYNAMIC RANGE	> 40 dB	
LEVEL ACCURACY	± 1.5 dB (25° C)	
MAX INPUT (SAFE)	+ 0 dB	
MAX INPUT (NO SATURATION)	- 20 dB	
REFERENCE LEVEL	-20 to -70 dBm (10 dB steps)	
DISPLAY (IPAQ)	see HX2700 specifications	
OPERATING SYSTEM (IPAQ)	Windows® Mobile 5.0	

TRIGGERING

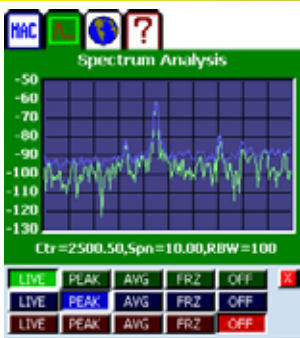
USER CONTROL	auto or manual	
PACKET/INTERFERENCE TRIGGER	trigger analyzer when input power ≥ threshold (20 MHz span)	
TRIGGER THRESHOLD	user settable in dBm	
TRIGGER DELAY	user settable in μS	

GENERAL SPECIFICATIONS

INTERNAL GPS RECEIVER	12-channel GPS receiver	
INPUT CONNECTOR	SMA Female, 50 Ohm	
POWER	Li-PO, AC or DC	
RUNTIME INTERNAL BATTERY	> 3 hours	
RECHARGE TIME	< 3 hours	

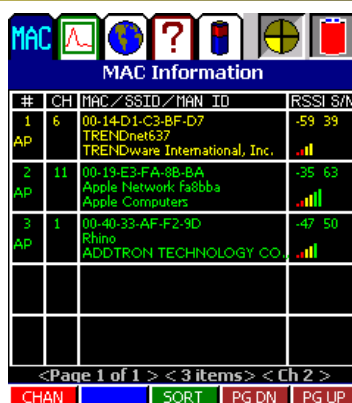
PHYSICAL SPECIFICATIONS

WEIGHT	3 lbs.
DIMENSIONS	3"H x 5"W x 9"L (water resistant, high impact ABS plastic case)



SPECTRUM ANALYSIS

- Full spectrum sweep
- Preset channel sweep
- Variable Resolution Bandwidth
- Set Reference Level
- Channel Power
- Screen Averaging
- Video Smoothing
- Marker/Delta Functions
- Trigger
- Multiple Traces
- Spectrogram
- Histogram
- Persistence



#	CH	MAC/SSID/MAN ID	RSSI/S/N
1	6	00-14-D1-C3-BF-D7 TRENDnet637 TRENDware International, Inc.	-59 39
2	11	00-19-E3-FA-8B-8A Apple Network fa8bba Apple Computers	-35 63
3	1	00-40-33-AF-F2-9D Rhino ADDTRON TECHNOLOGY CO.	-47 50

PACKET DEMODULATION:

- Survey sweep of channels for all APs
- Individual channel analysis of APs or STAs
- Absolute channel
- W.I.S.P. antenna alignment
- RSSI for each AP/STA in true dBm
- Multipath in chips and nanoseconds
- AP manufacturer's ID



MAC Address	Action
34-ef-a3-7a-22-0f	Add
00-14-D1-C3-BD-5B	Delete
00-1E-52-F4-FB-16	Delete
00-11-24-03-5B-D1	Delete
00-05-3C-06-F7-6C	Delete
00-1B-9E-A7-3A-C7	Auth
00-40-33-AF-F6-E9	Auth

NETWORK SECURITY:

- Authorize or Unauthorize MAC addresses
- Generate valid AP list automatically
- Upload AP list from PC
- Flag invalid APs as "suspect"
- Detects WEP encryption
- Detects WPA encryption