

YELLOWJACKET® B/A/N/G

HANDHELD 802.11 B/A/N/G Wi-Fi ANALYSIS

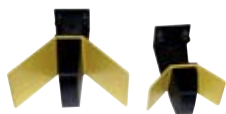
Yellowjacket® B/A/N/G is a wireless test receiver system that demodulates, sweeps, analyzes, and optimizes all popular 802.11 Wi-Fi network standards including 802.11b/g (2.4 GHz), 802.11a (5 GHz) and even 802.11n. The calibrated receiver is a passive measurement device that is network independent so it remains “invisible” to any Wi-Fi network. **Yellowjacket® B/A/N/G** is also a powerful spectrum analyzer that measures RF energy (2.0-4.0 & 4.9-5.9 GHz) allowing not only detailed interference analysis but the ability to see the “whole picture” of your 2.4 and 5 GHz network WISP or hotspot. When equipped with a BVS DF (Direction Finding) antenna, **Yellowjacket® B/A/N/G** locates and pinpoints rogue APs and STAs and even detects spurious interference from sources such as microwave ovens and cordless phones. Powerful packet analysis features such as Multipath (Ec/Io), Delay Spread, Channel Frequency Response (CFR), SSID and Received Signal Strength Indicator (RSSI) give **Yellowjacket® B/A/N/G** the distinction of being the only true handheld RF spectrum protocol analysis and direction finding tool accurate to within 1 dB. **Yellowjacket® B/A/N/G** functions as a complete WLAN analysis system offering both measurements made through packet demodulation and spectrum analysis in a rugged, handheld package.

Shown with
optional Direction
Finding Antenna

FEATURES:

- Measure 2.4 GHz coverage for DSSS and OFDM WLANs within the IEEE 802.11b/n/g standard
- Measure 5 GHz coverage for OFDM WLANs within the IEEE 802.11a standard
- Receive, filter and process DSSS and OFDM studies all in a handheld Windows Mobile OS® environment
- 802.11 packet Demodulation tools for Channel Frequency Response and Antenna Alignment
- Complex AP / STA list analysis including Multipath, Absolute Channel, and SSID
- Full Spectrum Analysis including Power Triggers, Waveform Traces & Full Spectrum Sweep
- Measure RSSI in true dBm with a calibrated receiver
- Multipath and RSSI; narrow band & total channel power
- Rechargeable Internal Li-Poly battery or A/C power
- MAC Security Authorization Lists/Detection/Alarms as well as WEP and WPA encryption detection
- Internal GPS receiver for realtime geo-coding of all measurements
- Optional Direction Finding antennae for locating rogue APs, WLAN hackers and spurious RF interference
- Optional RJ-45 Ethernet Port for fast, networked PC communication
- Optional Swarm™ mapping/validation coverage analysis software

2.0-4.0 GHz
Full Spectrum Analysis
4.9-5.9 GHz



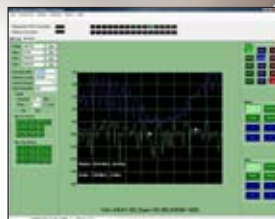
Optional 2.4 GHz Optional 5 GHz



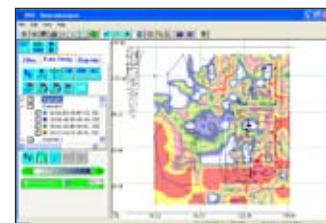
Optional 30 dB Attenuator



Optional 12V Power Inverter



Optional Remote Monitoring Software



Optional Swarm™ Mapping Analysis Software

Call us today for more information:

TOLL FREE 1-888-737-4287 / (outside U.S. & Canada) +1 732-548-3737

www.bvsystems.com

sales@bvsystems.com

**BERKELEY
VARITRONICS
SYSTEMS®**
Clarifying RF

Providing wireless solutions for over 35 years.

YELLOWJACKET®-B/A/N/G

HANDHELD 802.11B/A/N/G Wi-Fi ANALYSIS

DEMODULATOR SPECIFICATIONS

BANDS SUPPORTED

2.4-2.5 GHz, 5-5.8 GHz (includes 802.11a, 802.11n and 802.11h)

RF SENSITIVITY (Wide Band)

-20 to -90 dBm

PACKET PREAMBLE DEMODULATOR and ANALYZER

Multipath Measurement and Graphical Display

CORRELATED POWER MEASUREMENTS

RATIO

Correlated Power (dBm)

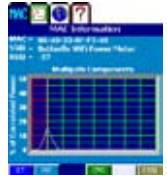
-30 dBm : -100 dBm

Correlated Power to Total Power Ec/Io (dB)

0 dB : -10 dB

Total Channel Power Measurement

- 20 dBm : -80 dBm



SPECTRUM ANALYZER SPECIFICATIONS

BANDS SUPPORTED

2.0 - 4.0 GHz & 4.9 - 5.9 GHz (includes 802.11a, 802.11n and 802.11h)

AVERAGE NOISE FLOOR (NO INPUT)

< -100 dBm (reference level -70 dBm, resolution bandwidth = 50 kHz)

DYNAMIC RANGE

> 40 dB

LEVEL ACCURACY

± 1.5 dB (25° C)

MAX INPUT (SAFE)

+ 0 dB

MAX INPUT (NO SATURATION)

- 20 dB

REFERENCE LEVEL

-20 to -70 dBm (10 dB steps)

DISPLAY (IPAQ)

see HX2700 specifications

OPERATING SYSTEM (IPAQ)

Windows® Mobile 5.0



TRIGGERING

USER CONTROL

auto or manual

PACKET/INTERFERENCE TRIGGER

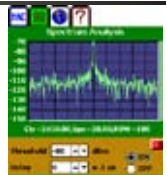
trigger analyzer when input power ≥ threshold (20 MHz span)

TRIGGER THRESHOLD

user settable in dBm

TRIGGER DELAY

user settable in µS



GENERAL SPECIFICATIONS

INTERNAL GPS RECEIVER

12-channel GPS receiver

INPUT CONNECTOR

SMA Female, 50 Ohm

POWER

Li-PO, AC or DC

RUNTIME INTERNAL BATTERY

> 3 hours

RECHARGE TIME

< 3 hours



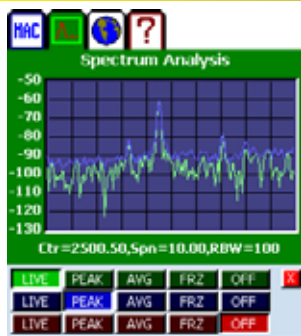
PHYSICAL SPECIFICATIONS

WEIGHT

3 lbs.

DIMENSIONS

3"H x 5"W x 9"L (water resistant, high impact ABS plastic case)



SPECTRUM ANALYSIS

Full spectrum sweep
Preset channel sweep
Variable Resolution Bandwidth
Set Reference Level
Channel Power
Screen Averaging
Video Smoothing
Marker/Delta Functions
Trigger
Multiple Traces
Spectrogram
Histogram
Persistence

MAC Information				
#	CH	MAC/SSID/MAN ID	RSSI	S/N
1	6	00-14-D1-C3-BF-D7 TRENDnet637 TRENDware International, Inc.	-59	39
2	11	00-19-E3-FA-8B-8A Apple Network Fa8bba Apple Computers	-35	63
3	1	00-40-33-AF-F2-9D Rhino ADDTRON TECHNOLOGY CO.	-47	50

<Page 1 of 1> < 3 items> < Ch 2 >

CHAN SORT PG DN PG UP

PACKET DEMODULATION:

Survey sweep of channels for all APs
Individual channel analysis of APs or STAs
Absolute channel
W.I.S.P. antenna alignment
RSSI for each AP/STA in true dBm
Multipath in chips and nanoseconds
AP manufacturer's ID

Security	
34-ef-a3-7a-22-0f	Add
AUTHORIZED	
00-14-D1-C3-BD-5B	Delete
00-1E-52-F4-FB-16	
00-11-24-03-5B-D1	Clear
00-05-3C-06-F7-6C	
UNAUTHORIZED	
00-1B-9E-A7-3A-C7	Auth
00-40-33-AF-F6-E9	Clear
Generate Authorized List	
Save List	Open List

NETWORK SECURITY:

Authorize or Unauthorize MAC addresses
Generate valid AP list automatically
Upload AP list from PC
Flag invalid APs as "suspect"
Detects WEP encryption
Detects WPA encryption