

FTE-1700 OTDR



Features:

- Most Affordable OTDR on the Market
- Bluetooth Operation W/free Android App
- IEC61300-3-35 Pass/Fail Grading
- 32 dB Dynamic Range
- Short Dead Zone
- Integrated Autowave Power Meter
- Stable Light Source
- Ultra Fast Trace Acquisition
- One Button Testing
- Short Dead Zone
- Event Table with Pass/Fail Feature
- Trace Comparison with Trace Overlay
- Simple Graphical User Interface
- Training with Onboard Help Screens
- Telcordia Compatible Software Included
- Light Weight Rugged Enclosure
- SM, MM and Quad Units Available
- Onboard Memory for 500 traces
- Bright Easy To Read Color Display

Small and Rugged

The FTE-1700 is small and light weight. It weighs less than 2 lbs., fits comfortably in your hand and built in a rugged enclosure surrounded by a protective rubber boot.

Construction Mode

This feature assist with testing a large number of fibers with similar settings. By pressing just one button the OTDR will test a fiber at two wavelengths, save each test and then display both tests for review.

Bluetooth Operation

Want a larger display, want to geotag your files, or email your traces, use the Bluetooth feature and operate the OTDR with a compatible Android device.

Auto Test

The AutoTest feature of the OTDR does a quick test of the fiber conditions, sets the range and pulse width, then produces a trace of the fiber under test. This is ideal to use if unfamiliar with OTDR testing or the approximate length of the fiber is not known.

Trace Analysis

The trace analysis system gives the user the ability to determine quickly if the fiber meets measurement criteria with its Pass/Fail capabilities.

Integrated Video Scope

Use the video scope with our optional VIS-300 video probe to check cleanliness and condition of fiber connectors prior to connection with equipment or fiber under test.

File Storage

Onboard file storage for up to 500 traces and files may be downloaded to a computer through the USB/PC port.

Trace Analysis and Reporting

Project reporting and documentation is fast and easy with a Pass/Fail feature, onboard event table and the supplied report generating software with multi-trace capability.

Integrated Loss Test Set

The FTE7000 has an integrated Loss Test Set. When used with compatible equipment from TTI's 1500 series or other TTI OTDRs with loss test sets, the auto wavelength and auto test capabilities will speed testing and help eliminate user error.



FTE-1700 Specifications

OTDR	
Wavelength	850, 1300, 1310, 1550, ±20nm
Dynamic Range	26/27dB MM, 32/30dB SM (7000E - 30dB)
Pulse Width	20 - 10,000 ns
Units of Measurement	km, kf, mi
Event Dead zone	2m
Attenuation Dead Zone	5m
Resolution	.25 - 64m
Distance Uncertainty	±(0.75m + 0.005% x distance + sampling resolution)
Full Scale Distance Range	1-64km MM, 1-240km SM
Typical Real-time Refresh Rate	4 Hz
Group Index of Refraction (GIR)	1.024 - 2.048
Linearity	± .05 dB/dB
Memory Capacity	1000 Traces
Memory Type	Internal
Power Supply / Charger	Input 100-240VAC, 50-60Hz, 0.3A, Output 9V, 0.67A
Battery	4hr
Storage Temperature	-20 to 60 C
Operating Temperature Range	-10 to 50 C
Dimensions (with rubber boot)	8.62" L x 4.25" W x 2.375" H (219mm L x 108mm W x 60mm H)
Weight	1.6 lbs.
Communications ports	USB/PC
Connector Styles	FC, ST, SC Interchangeable
Accessories Provided	Universal Power Adapter w/US, UK, CE, and AU Plugs, Interchangeable FC/ST and SC Adapters, Certsoft Software Suite, Protective Rubber Boot, USB Cable, Manual on CD

VFL	
Emitter Type	Laser
Wavelength	650nm ±5nm
Laser Safety Class	Class II/FDA21 CFR1040.10 & 1040.11 IEC 825-1: 1993
Connector Type	2.5mm Universal
Output Power	1mW Max.

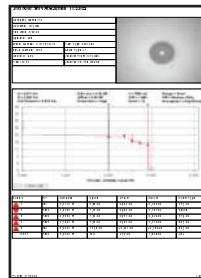
Power Meter	
Detector Type	InGaAs
Connector Type	2.5mm Interchangeable
Measurement Range	+5 to -77dB (CATV +25 to -57dB)
Calibrated Wavelengths	850, 1300, 1310, 1490, 1550, 1625nm
Units of Measurement	dBm, dB
Resolution	.01 dB
Power Measurement Uncertainty	± 0.18 dB under reference conditions, ± 0.25 dB from 0 to -65 dBm, ± 0.35 dB from 0 to +5 dBm and from -65 to -77 dBm
Power input Range	+5 to -77dBm
Autotest Range	0 to -40dB

CW Light Source	
Wavelengths	850, 1300, 1310, 1550, 1625 nm ±20nm
Output Power	0 dBm (-3dBm @ 1625nm)
Laser Safety Classification	Class I Safety Per FDA/CDRH and IEC- 825-1 Regulation
Modulation Modes	CW, 270 Hz, 1000 Hz, 2000 Hz

TTI reserves the right to change specifications without notice.

TTI reserves the right to change specifications without notice.

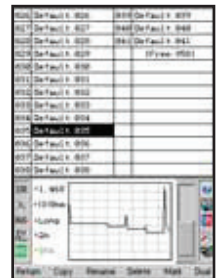
Ordering Information	
FTE-1700-8513	Dual MM 850/1300nm OTDR with Video Scope and probe, LTS and VFL
FTE-1700-1310	SM 1310nm OTDR with Video Scope and probe, LTS and VFL
FTE-1700-1315	Dual SM 1310/1550nm OTDR with Video Scope and probe, LTS and VFL
FTE-1700-QUAD	MM/SM 850/1300/1310/1550nm OTDR with Video Scope and probe and LTS
FTE-1700E-1310	30 dB Economy SM OTDR 1310nm (No Video Probe, LTS or VFL)
VIS-300	TTI Video Inspection Probe



View multiple traces with the certification software and associate loss test results and connector images with traces for test reporting



Use the interactive event table with event map to evaluate traces



File management screen with file data and representation of highlighted trace

